

PHOTOS
FANTASIA
FAIR
1981

PHOTOS
S



MEMORIES

FANTASIA FAIR 1981
MARIETTE P. ALLEN, PHOTOGRAPHER

FF7-A Pictorial
Review
B-W

FANTASIA FAIR 1981

LA CA # Y-88

PLASTICS, INC. 3628 CRENSHAW

20TH CENTURY





LA CA #V63



3023 CRENSHAW PLASTICS, INC.



20th CENTURY





SEP 44 A3 A1



NOV 44 B3 B1

LA CA #V53



PLASTICS, INC. 3629 CRENSHAW



20th CENTURY





TV CV 2133

BYANCO INC. 8888 COLUMBIA

SON GENIUS

LA CA #V83



3023 CRENSHAW PLASTICS, INC.



20TH CENTURY





TV CV #188

8888 88888888

88888888 UC

88888888

LA CA #V-66



PLASTICS, INC. 3628 CRENSHAW



20th CENTURY



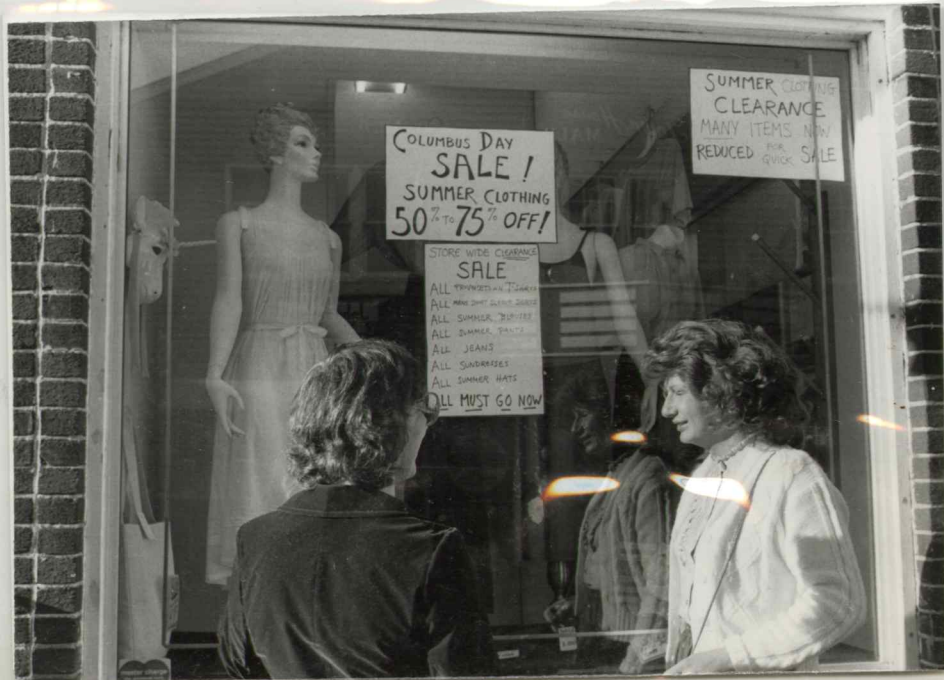


11/11/83

UNIVERSITY

STUDENT

PHOTO





5014 CENTRAL AVENUE '100'

3258 CLEVELAND TR CV #101





50th ANNIVERSARY STRAIGHT INC

3558 CUMBERLAND TR CV #151





50th CENTURY FINANCE INC

8325 AL WAHNEBAM TV CO #154





50th CENTURY PLASTICS, INC.

8958 OVERSHAW LN. CV #187





AMERICAN CENTRAL PHOTO

8355 WASHINGTON ST. #101

3625 CRENSHAW, L.A., CA. 90008



20TH CENTURY PLASTICS, INC.





85-V # 10-A-1, MARSHES 8888



50th CENTURY DEVELOPMENT PTOS



3023 GREENSHAW LA. CA. 91742

20th CENTURY PLASTICS, INC.

THIS PAPER MANUFACTURED BY KODAK



3038 CLEVELAND CT # 1-02



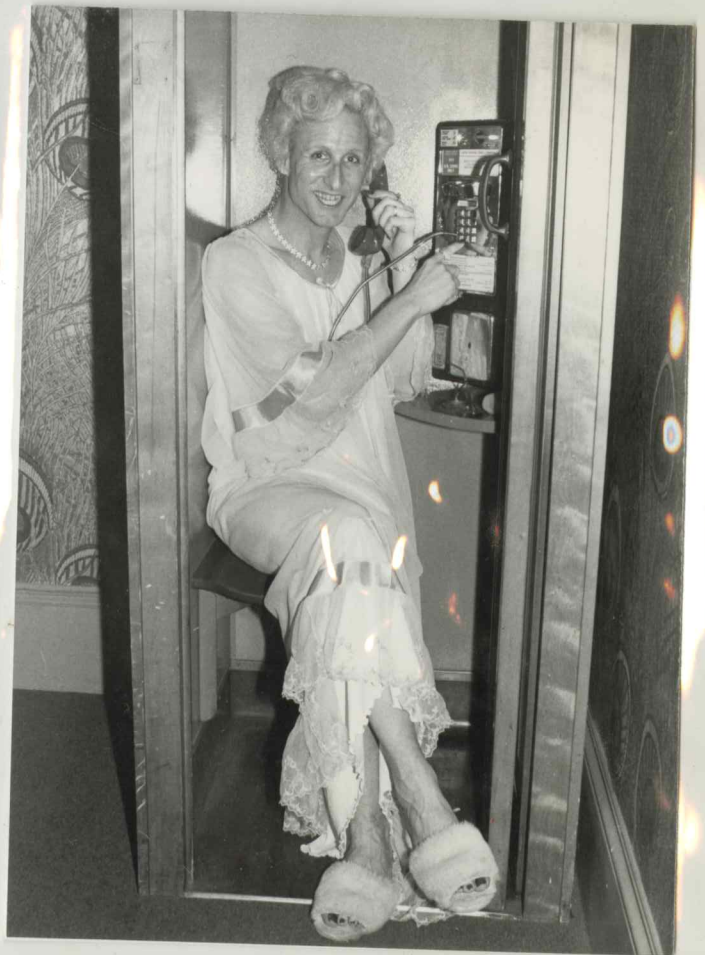
5014 CENTURY PLAZA INC

3528 CRENSHAW, L.A., CA. 90008



20TH CENTURY PLASTICS, INC.





3953 CHEVROLET TRUCK # 1-12

50th CENTURY BROADCASTING

3028 CRENSHAW LA. CA. #1-45



20TH CENTURY PLASTICS, INC.





3888 CSEW/2H/M. 177 C Y # A-12



501F CEM/12/24 B/21/12/2-11/12

3628 GRENSHAW, LA, CA. 4-7-65



20TH CENTURY PLASTICS, INC.





3838 CLEVELAND TULSA # 1-193



50th CENTURY TELEVISION

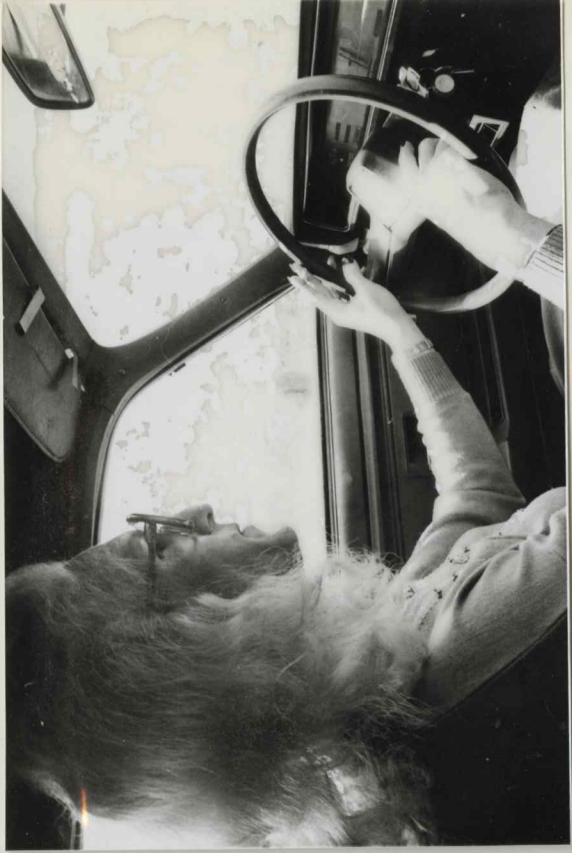


clean
burn in sky
if pass -

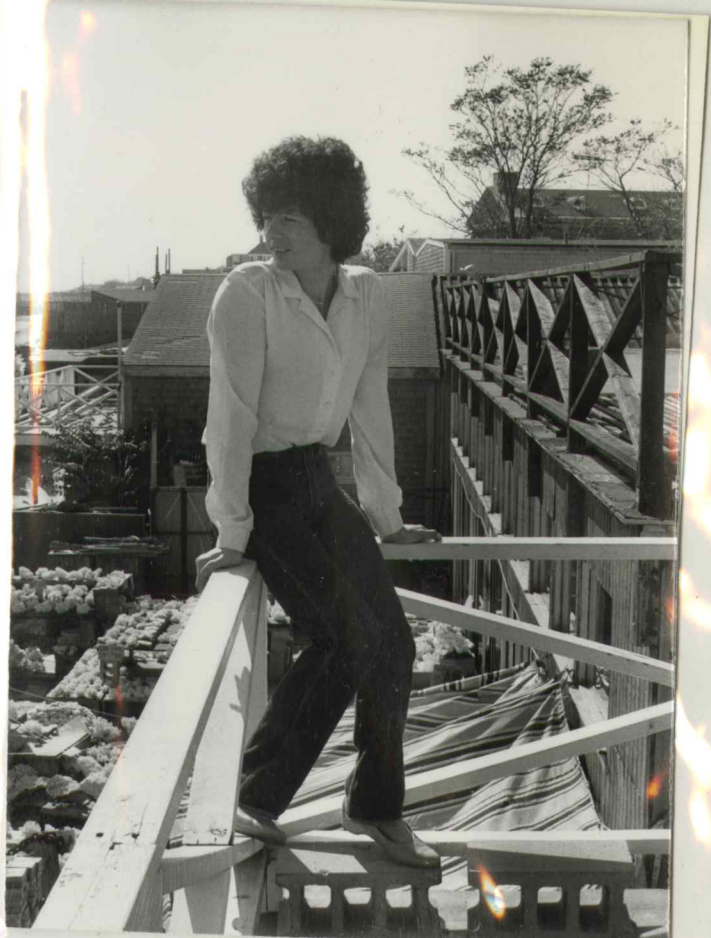


3528 CENSHAW, L.A., CA. 91145

20TH CENTURY PLASTICS, INC.



on
(f)





3628 CRENSHAW L.A. CAL. #V84

20TH CENTURY PLASTICS, INC.